

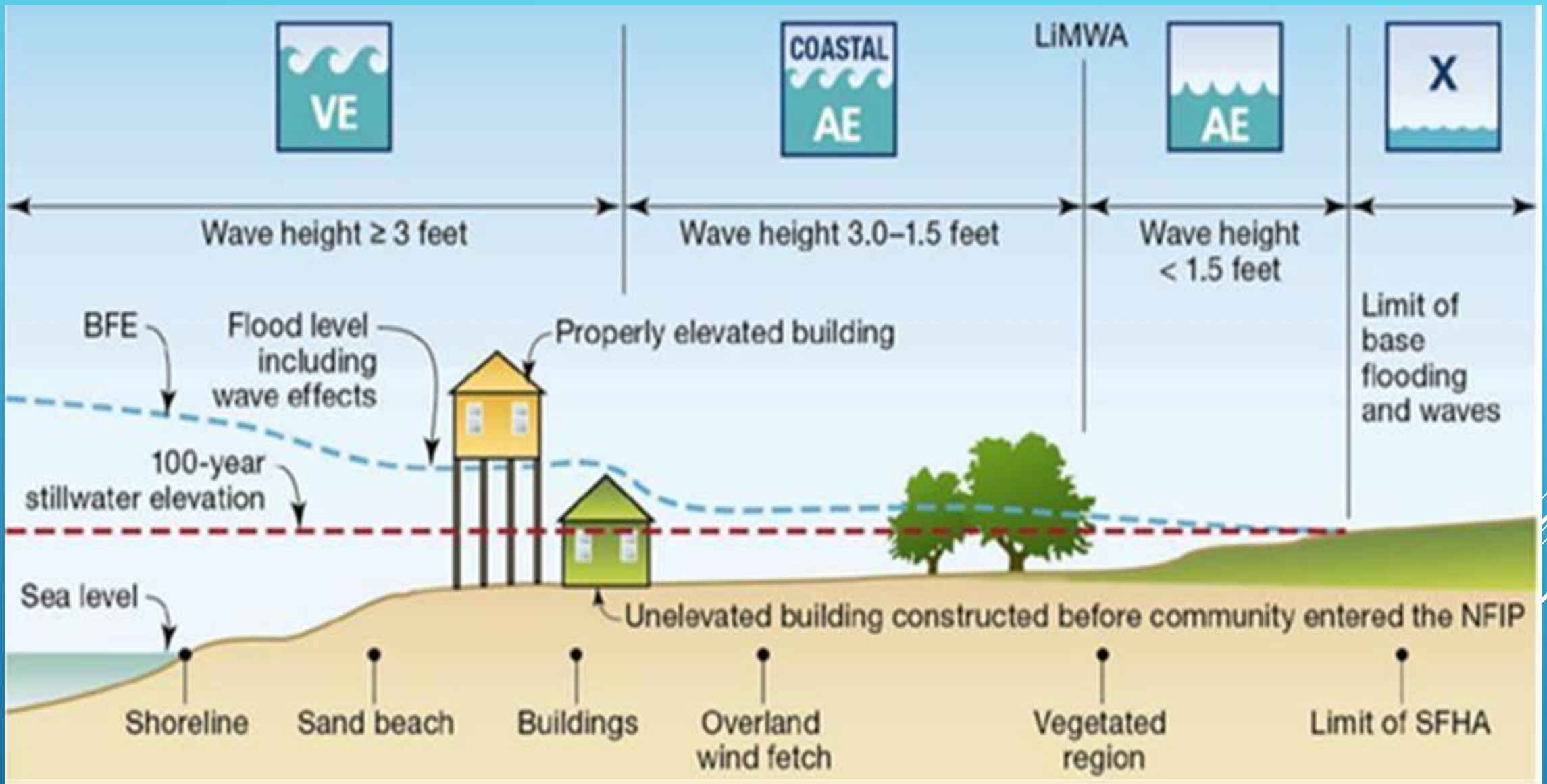
NEW FIRM MAPS WITH LIMWA LINES

LIMWA Line Delineates Coastal A-Zones

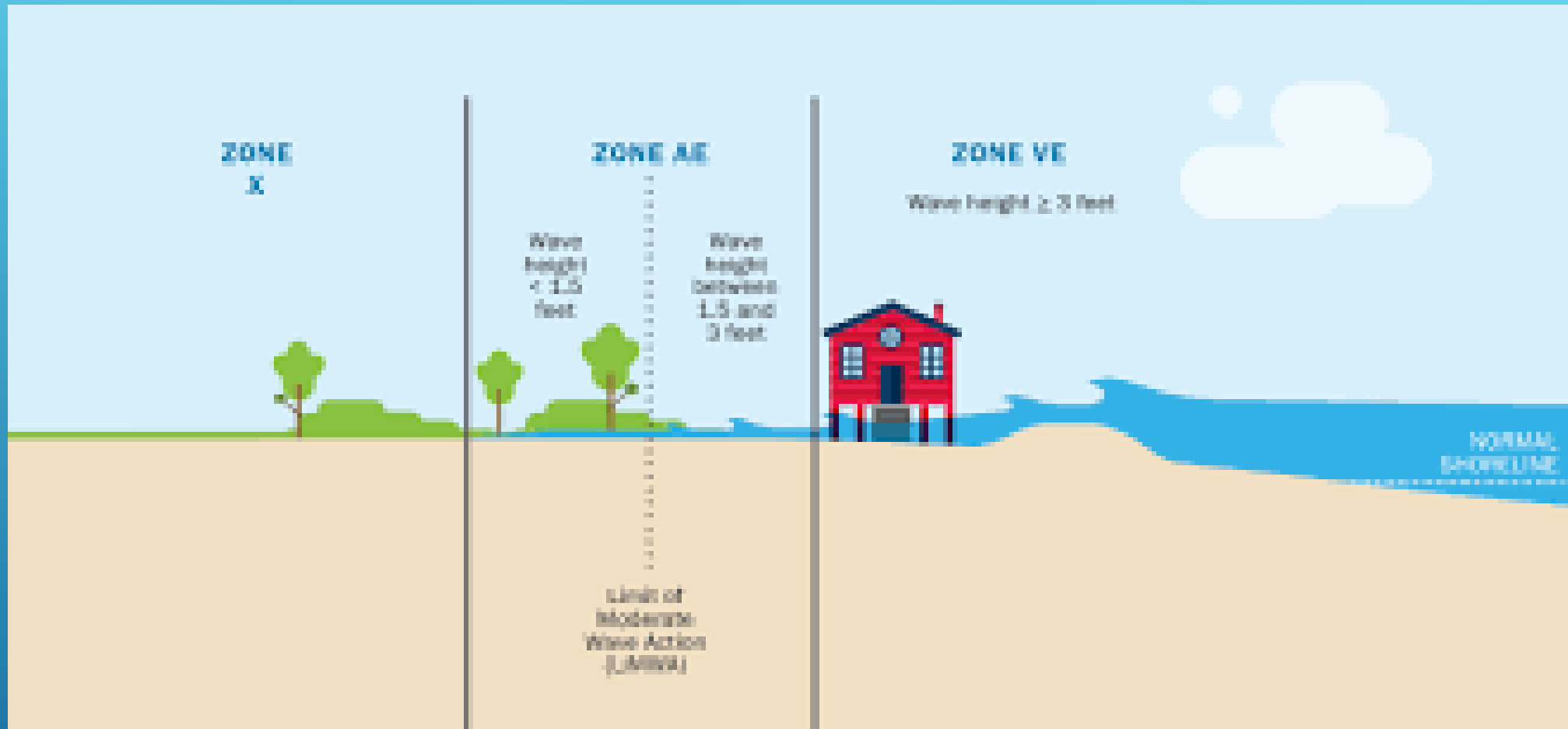


- ▶ The State and FEMA technically started working on updating the Flood Insurance Rate Maps (FIRMs) in 2007. Previous from 3/16/89.
- ▶ The first maps were pushed out during the “1,000 year storm” of 2015.
- ▶ Revisions were made in 2019 and 2021 (AECOM).
- ▶ Final FIRMs and updated Flood Insurance Study (FIS) were adopted by the County on May 9, 2023.
- ▶ LiMWA line demarcating the Coastal A Zone made official.
- ▶ We also updated our Flood Damage Prevention Ordinance.

NEW FIRMS ADOPTED 5/9/23



COASTAL FLOOD ZONES DIAGRAM



COASTAL FLOOD ZONES – FLOODING DIAGRAM

- ▶ “Through the new pricing methodology, FEMA will better inform individuals and communities about flood risk, set premiums to strongly signal those risks, and promote actions to mitigate against them.”

- ▶ How premiums are calculated under Risk Rating 2.0
 1. Likelihood of different flood perils (flash, wave action, coastal erosion, etc.).
 2. Building characteristics like foundation type and 1st floor elevation.
 3. Elevation Certificate (EC) and distance from the flooding source.
 4. Replacement cost value of the structure. (\$250,000 max SF)
 5. Mitigation efforts on the building (flood vents & flood resistant materials).

- ▶ Get quotes!

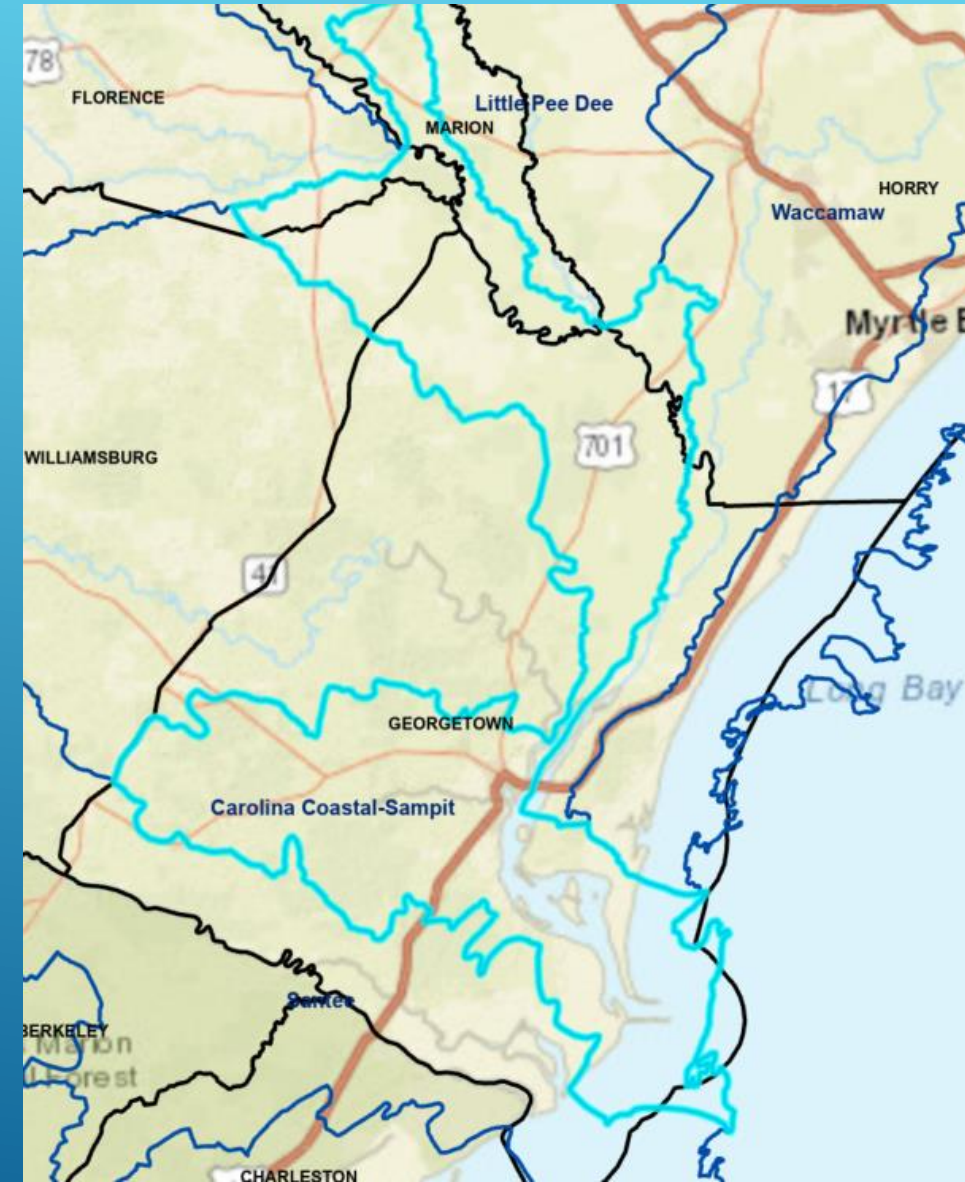
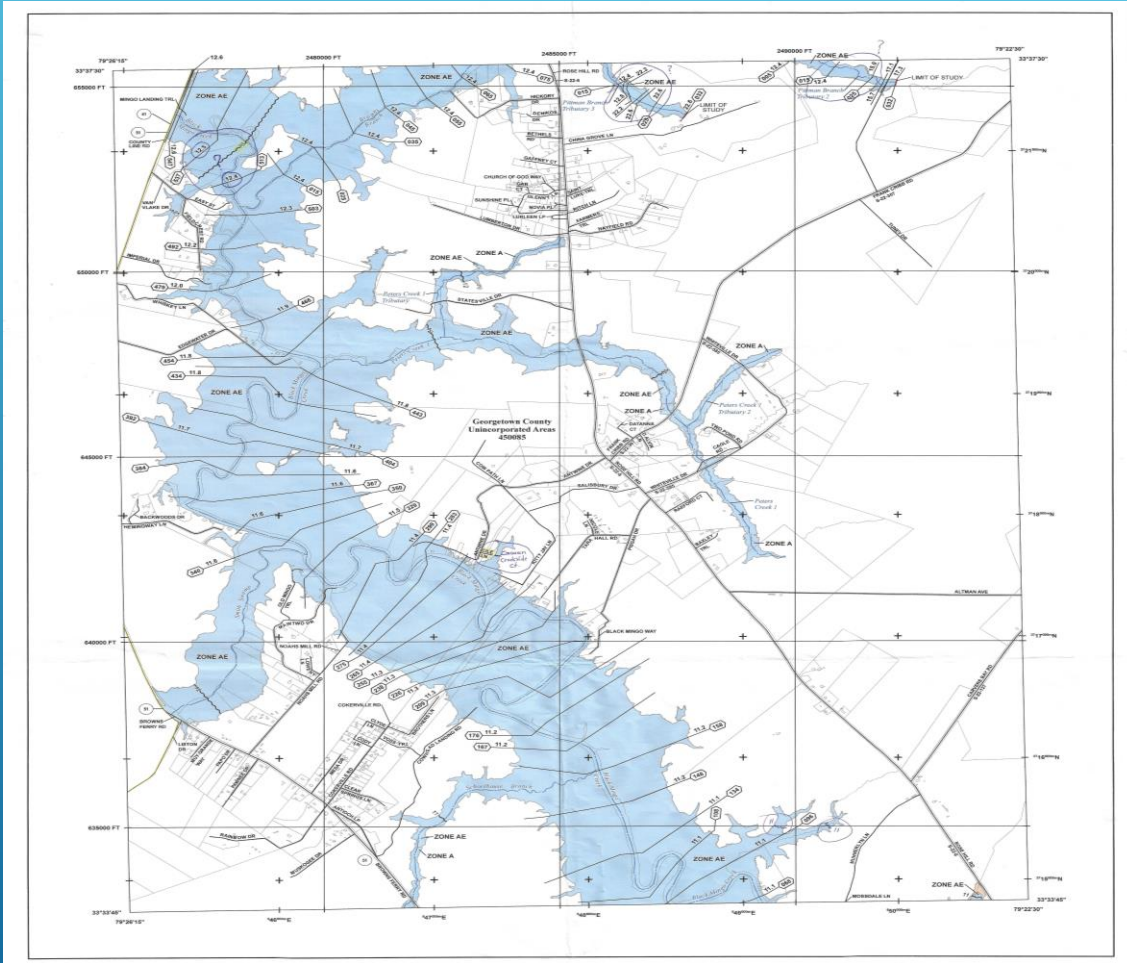
FEMA'S RISK RATING 2.0 (4/1/23)

- ▶ Web-based Flood Management & Solution Software
- ▶ User-friendly and GIS based (public access)
- ▶ Forerunner helps us streamline and organize our floodplain management in the County
 - ▶ CRS –credit rating system (class 7)
 - ▶ Preliminary Damage Assessment (PDA) - new app
 - ▶ Substantial Improvement/Substantial Damage (SD/SI) – 5yr
- ▶ Also, scfloodimpact.com

FORERUNNER SOFTWARE
GEORGETOWNCOUNTYSC.WITHFORERUNNER.COM

Black River Watershed Map Updates - End of 2024

Coastal Sampit (Pee Dee) Watershed Map Updates - End of 2025



FUTURE MAP AMENDMENTS



- ▶ Matthew Millwood, CFM - mmillwood@gtcounty.org
- ▶ Steven Elliott, CBO - selliott@gtcounty.com

- ▶ State SCDNR Mapping Division – Jessica Artz - (803) 734-4012

- ▶ National FEMA Region IV (Atlanta, GA) – (770) 220-5200

CONTACTS