

DEBORDIEU COLONY

HURRICANE SEASON
June 1st - November 30th

SAFETY GUIDE

Table of Contents

What Is An Evacuation?	2
Why Should You Evacuate?.....	2
Plan Your Evacuation	3
Preparing For A Hurricane.....	4
Keeping Informed	6
At Home or On the Road.....	6
During A Hurricane	7
After a Hurricane	8
Important Web Sites.....	9
Important Phone Numbers	10

What Is An Evacuation?

South Carolina no longer uses the terms Mandatory Evacuation and Voluntary Evacuation. A single evacuation order will be issued by the Governor or local Georgetown County officials when significant emergency conditions threaten an area. In the past, evacuation has included 100% of the areas east of Highway 17. In Georgetown County, the Hurricane Response Plan identifies the Sheriff's Office as being solely responsible for evacuation including operations, traffic control points, and security in evacuated areas and actual announcement to the public in our area. The DCCA recognizes that in the interest of safety, convenience, and timeliness of evacuation, the best plan for all residents is to evacuate early before an official evacuation order is given.

Why Should You Evacuate?

Not Doing So Could Be Fatal

If we have a serious hit and you stay – and survive – you are lucky. However, if you are not lucky, you could sustain serious injury or death. Having been lucky once does not indicate you'll be lucky a second time. Those who have stayed and survived direct hurricane hits elsewhere have said, "It was the stupidest thing they ever did, and I will never do that again!"

Conditions Could Be Extremely Unpleasant

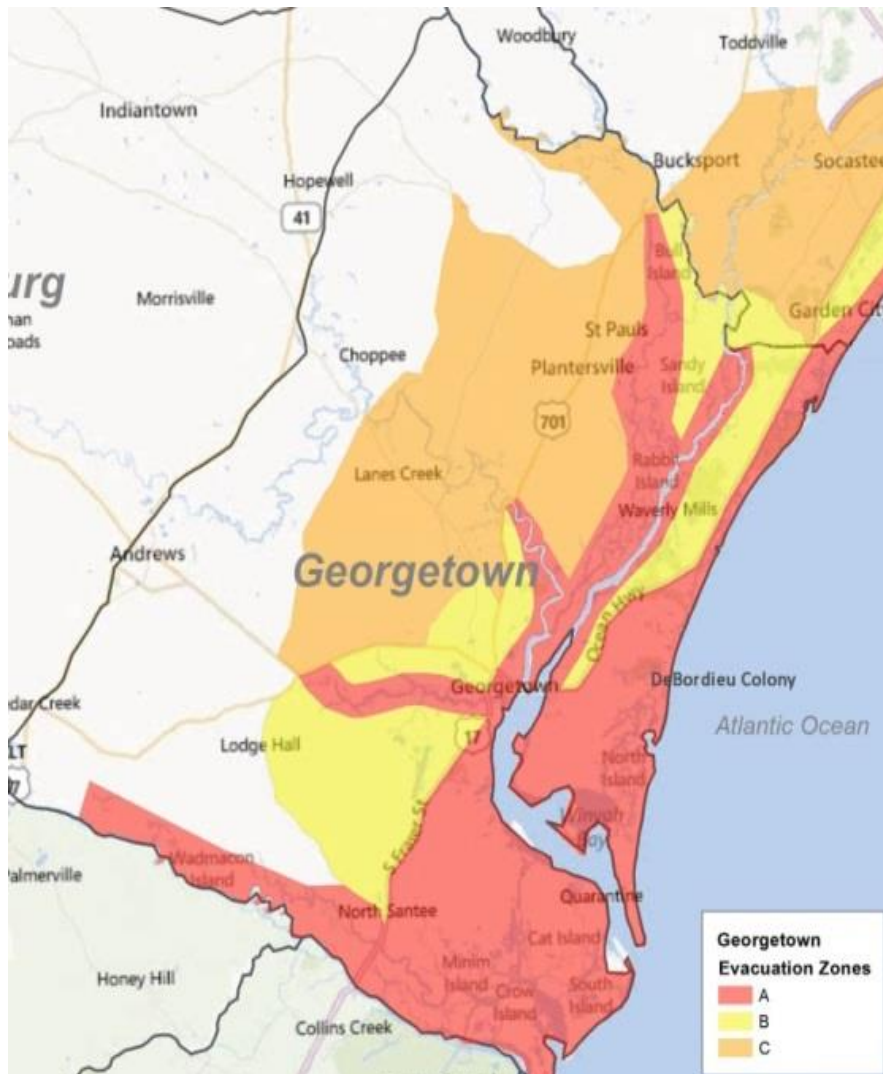
- Electrical power could be lost during a storm, and may not be restored for a long time.
- Emergency Medical and Fire Services will **NOT** be available.
- **No Escape** – Once the storm gets very bad, it will likely be impossible to change your mind and then leave. The roads may be blocked with downed trees and flooded.

Plan Your Evacuation

Know Your Zone!

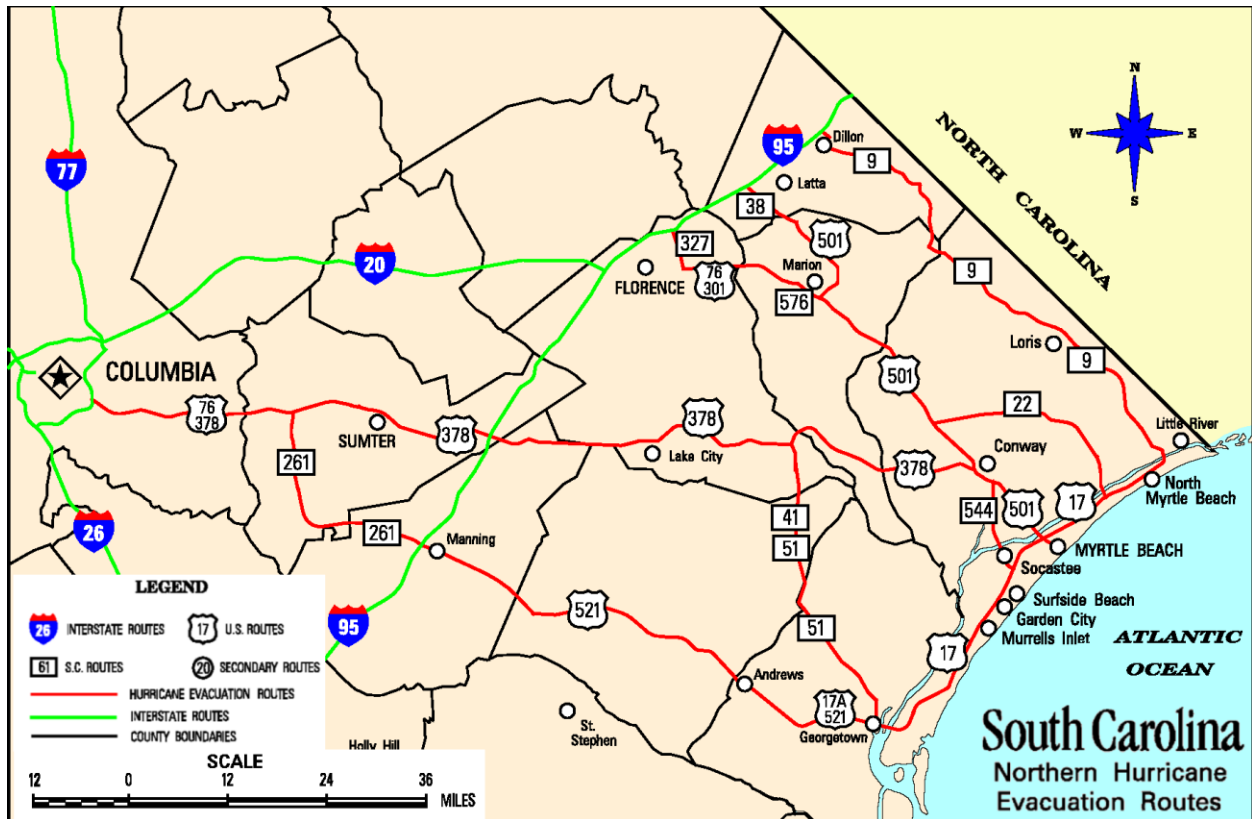
What is your Georgetown County Evacuation Zone? One of the hardest decisions to make when a hurricane approaches is whether to stay or travel hundreds of miles inland. To help you make the best decision possible, a new study conducted by the U.S. Army Corps of Engineers, redefines the evacuation zones in Georgetown County. The new evacuation zones are based on a hurricane's storm surge potential, not the wind speed. That makes sense since flooding, not wind, does the most damage and kills the most people.

Georgetown County has three surge evacuation zones, DeBordieu Colony is located in Evacuation Zone A shown on the map. Remember, if you are ordered to evacuate, it's because there's a real possibility of storm surge reaching your home.



Georgetown County Evacuation Route: Take US 17 south through Georgetown, then take US 521 to SC 261 to US 378 to Columbia.

Under certain conditions, an alternate route from Georgetown will be Black River Road to US 701 to SC 51 to SC 41 to US 378 at Kingsburg.



Preparing For a Hurricane

- Stay tuned to your local television and radio stations for emergency information.
- Learn safe routes inland and the locations of Official Shelters. Be ready to drive 20 to 50 miles inland to locate a safe place.
- Have disaster supplies on hand.
- Make arrangements for pets.
- Fuel up and Service family vehicles.
- Teach family members how and when to turn off gas, electricity, and water.
- Teach children how and when to call 911, Police, or the Fire Department and which radio station to tune to for emergency information.

- Protect your home. Cover your windows with permanent shutters, plywood panels, or other shielding materials. Bring in lawn furniture and other loose, lightweight objects, such as garbage cans, garden tools, etc.
- Determine where to move your boat during a storm.
- Develop an Emergency Communication Plan to use in case family members are separated from one another.

Pets

Pets are not allowed in Public Shelters for health and space reasons, so arrangements need to be made in advance for your pets.

Pet Disaster Supply Kit:

- Proper Identification including immunization records
- Ample supply of food and water
- A carrier or cage
- Medications
- Muzzle, collar, and leash

Protection from Flooding

Move valuables and appliances out of the basement.

Insurance Check-Up

Most people don't think about their insurance until after a disaster happens, but now is the time to be preparing.

Review your insurance coverage with your insurance agent to understand what it covers. Write down your basic insurance information, such as the name, phone number of your insurance agent, your policy number, and insurance claims phone number. Keep information with you if you have to evacuate.

Ask your agent what you can do to reduce your chance of a loss, such as installing hurricane shutters, in order to protect your valuable personal belongings.

Update your household inventory. Make a list, take pictures or videotape your personal belongings and store the inventory in a safe place outside your home.

Flood Insurance is NOT part of most homeowner insurance policies. You must buy separate flood coverage and there is a waiting period of 30 days. To obtain information on flood insurance, contact your local insurance agent, or call FEMA at 800-427-4661.

If your homeowner's policy does not have wind/hail coverage, you will need to purchase separate coverage, which has a waiting period of 15 days.

You can't buy homeowner's insurance after a hurricane watch or warning has been issued.

Keeping Informed

Hurricane Season

Hurricane season runs from June 1 through November 30; peak season is July through October. Stay current on weather reports and forecasts at least every other day; preferably every day.

Once a hurricane is identified as possibly being a factor for anywhere in the southeast U.S., watch every day. Once it reaches a point where it is 2-3 days away, tune in at least every few hours.

Where to Watch, Listen & Read

Local Radio Stations

- Charleston WIWF 96.9 FM
- Charleston WEZL 103.5 FM
- Myrtle Beach WYAV 104.1 FM
- Myrtle Beach WLFF 106.5 FM
- Georgetown WGTN 1400 AM
- NOAA NWSRadio 162.5

It is recommended that all residents purchase a NOAA radio. This radio will give you immediate updates of any potential disaster.

At Home or On the Road

Rest areas along I-26 will be enhanced with additional facilities to accommodate motorists efficiently. Department of Public Safety weigh stations will also be available as comfort stations.

Whether you plan to ride out the storm or travel to a safer environment you need to prepare ahead and consider taking or having available the following:

- "DeBordieu Colony Hurricane Season Safety Guide"



- Road Maps
- Non-Perishable food
- Drinking water (2 quarts per person, per day)
- First Aid Kit Medication
- Cash and Credit Cards
- Flashlight with extra batteries
- Non-Electric Can Opener
- Important Documents (insurance policies, family records, photo I.D., important telephone numbers)
- Jumper Cables
- Tire Repair Kit
- Baby Supplies
- Blankets/Sleeping Bags
- Fire Extinguisher
- Toiletries
- Games and Books
- If At Home, Fill Bathtub With Water For Sanitation Use

During A Hurricane

Protect Yourself

- Stay tuned to your local television and radio stations for emergency information.
- Stay inside a well-constructed building away from windows and doors even if they are covered. Go to an interior first-floor room, basement, or closet, or under the stairs.
- Be alert. Tornadoes are often spawned during hurricanes.
- If the “eye” of the storm passes over your area, be aware that severe conditions will return with winds from the other direction in a very short time.
- Try not to travel. Once a hurricane moves on shore it is extremely dangerous to drive. Please, if you decide to weather the storm in your residence – STAY INSIDE!

After A Hurricane

Returning To DeBordieu Colony

Wait until DeBordieu Colony declares the area safe before entering. As soon as possible, DCCA Management will be back on-line, and can be reached at their e-mail address, dcaadmin@debordieucolony.org.

Management will also notify all e-mail addresses on file, the conditions in DeBordieu Colony. You may also call 843-527-4436 for a recorded message of conditions. Roads may be closed for your protection. **Do not drive in flooded areas.**

Check gas, water, electrical lines, and appliances for damage. If you smell gas, or see electrical arcing, immediately leave your home and report the problem to the appropriate utility. It is your responsibility to work directly with your insurance company to begin the resolution process.

Avoid using candles and other open flames indoors. Use a flashlight to inspect damage.

Use the telephone to report life-threatening emergencies only. Telephone and electrical service will be under stress; use them only as absolutely necessary.

If the area is flooded, wildlife may have invaded your home seeking high ground. Enter with caution.

If you have cleanup work to do, do not endanger your health with exertion or stress. Eat well, rest often, and work a manageable schedule.

Important Web Sites

- **Georgetown County (Official Website)**
www.georgetowncountysc.org
- **City of Georgetown Fire Department**
www.georgetowncityfire.org
- **Georgetown County Sheriff's Office**
www.gcsheriff.org
- **S.C. Emergency Management Div.**
www.scemd.org
- **Traffic Information**
www.sctraffic.org
- **Road Closures**
www.dot.state.sc.us
- **Weather**
www.nws.noaa.gov
www.weather.com
- **National Hurricane Center**
www.nhc.noaa.gov
- **S.C. Web Site**
www.sc.gov
- **American Red Cross**
www.redcross.org
- **Federal Emergency Management**
www.fema.gov

Important Phone Numbers

EMERGENCY 911

GATEHOUSE..... 843-546-8520

Administration843-527-4436

Architectural Review Board843-527-5033

Club Manager.....843-527-6055

Grounds Operations Manager843-436-0066

Golf Course Manager843-527-2789

Golf Pro Shop843-527-6000

Tennis Pro Shop843-546-9408

Sales Office843-546-4176

Rental Office843-527-9894

